



# IPNext 500 NGN IP-PBX System

High-performance Fault Tolerant One System Dual IP-PBX Solution

NAT Traversal Service for SIP Port Blocking Issue Solving



**AddPac**

**AddPac Technology**

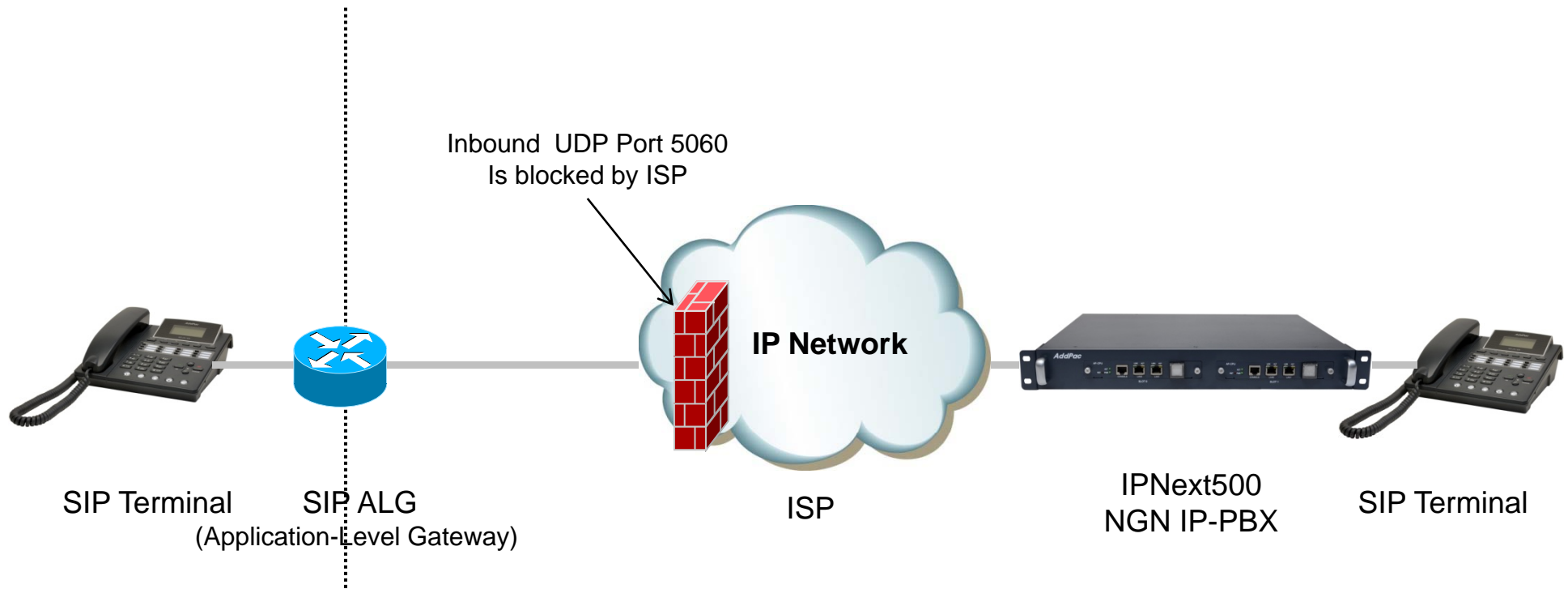
Sales and Marketing

[www.addpac.com](http://www.addpac.com)

# Contents

- Network Diagram
- IP Telephony Service Environment
- NAT Traversal Service
  - Call Established Mode
  - Change Session Mode
- Smart Multimedia Manager Configuration

# Network Environment

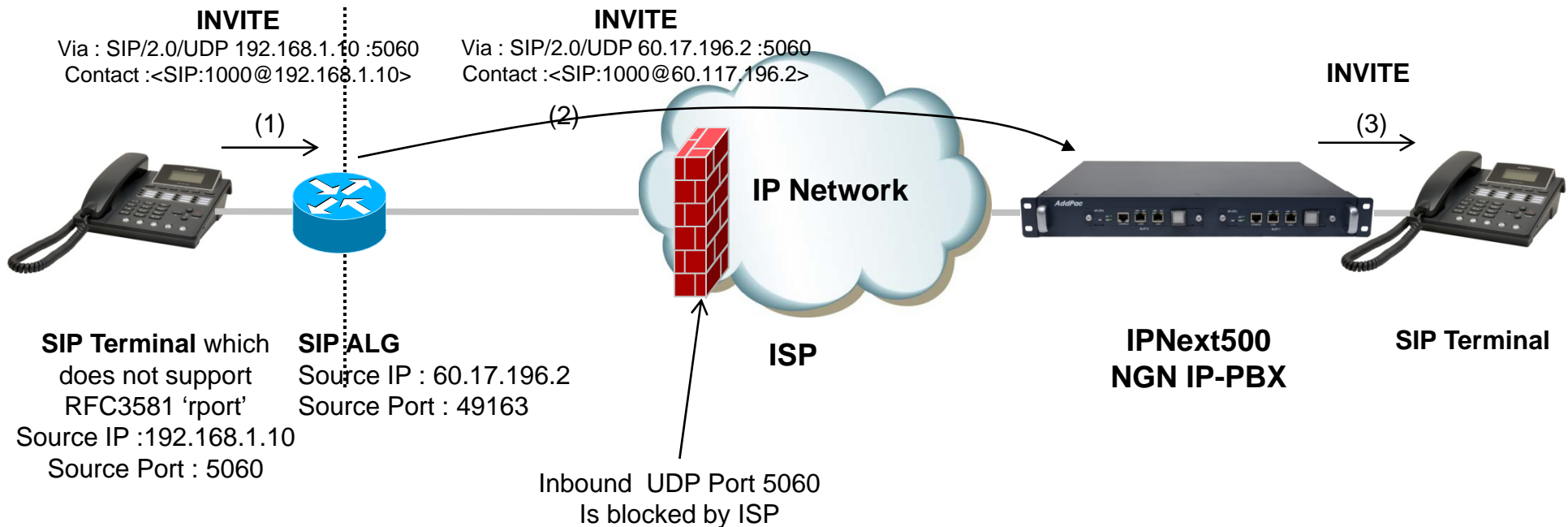


# IP Telephony Service Network Environment

- Terminal : IP Phone, VoIP Gateway, etc
  - Located below the NAT
  - Do not support RFC3581 (An Extension to the SIP for Symmetric Response Routing)
- NAT : SOHO Router
  - SIP ALG(Application-level gateway)
    - Replace IP in "Via" header with the public IP and port
    - Replace "Contact" with mapped public IP and port
    - Replace SDP media address with public IP and port
  - In some network environments, the SIP ALG replace "Contact" port in REGISTER message only. It's caused by wrong configuration or abnormal operation.
- Network : ISP Network
  - Inbound UDP port 5060 is blocked by local ISP

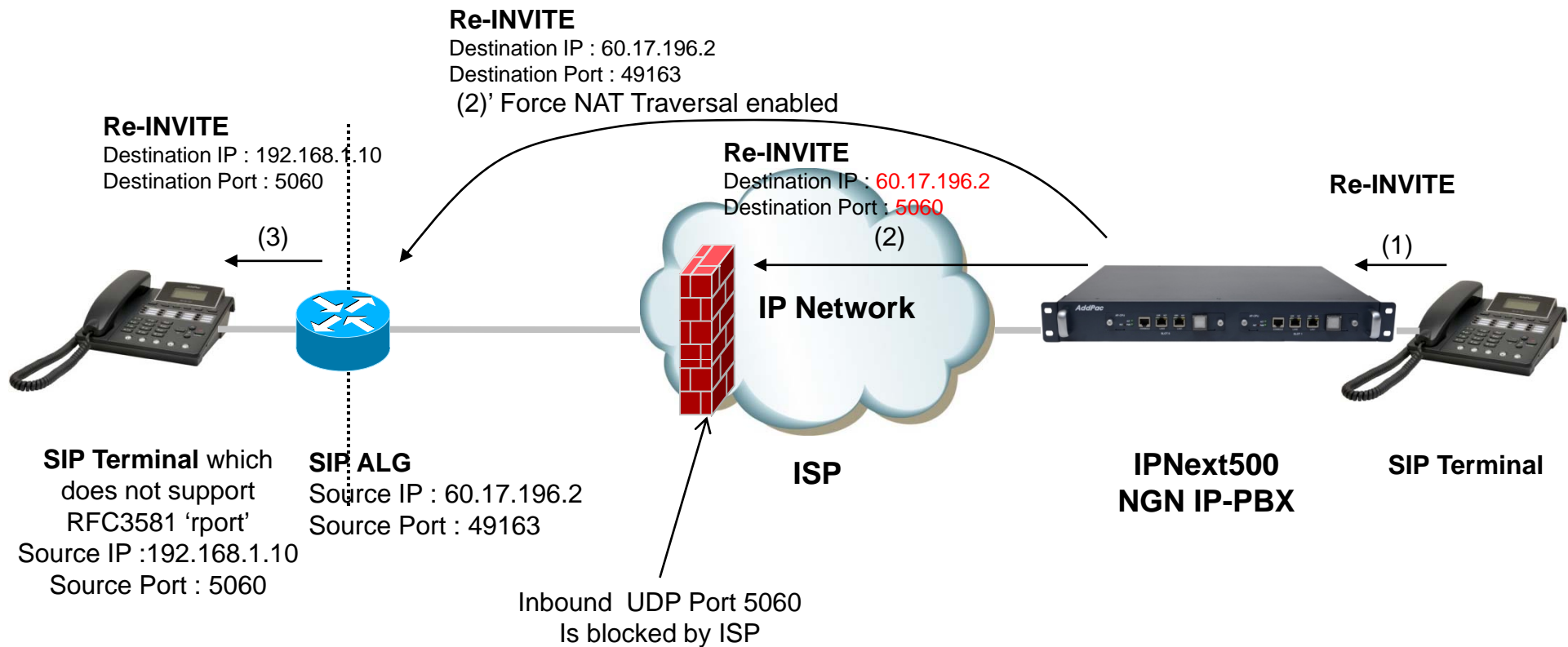
# NAT Traversal Service

## [Call Established]



# NAT Traversal Service

## [Change Session]



# Smart Multimedia Manager Configuration

- Smart Multimedia Manager
  - Device Management
    - Devices
      - Server
        - » (IPNext) Properties
- Check 'Force NAT Traversal' option

The screenshot shows the 'Server Properties' dialog box with the 'SSCP Connections' tab selected. Within this tab, the 'SIP' sub-tab is active. The configuration parameters are as follows:

Parameter	Value	Range
Retry Count	5	(1-10)
Retry Timeout	500	(100-4000 msec)
Invite Expire Timeout	180	(5-600 sec)
Register Expire Timeout	0	(0-86400 sec)
Minimum Session Expire	1800	(30-86400 sec)

**Response**

Parameter	Value
Response Type	Default
SDP Type	Default

**Transport Type**

UDP       TCP

Force NAT Traversal

Buttons: Ok, Cancel



# Thank you!

**AddPac Technology Co., Ltd.**  
Sales and Marketing

Phone +82.2.568.3848 (KOREA)

FAX +82.2.568.3847 (KOREA)

E-mail [sales@addpac.com](mailto:sales@addpac.com)